

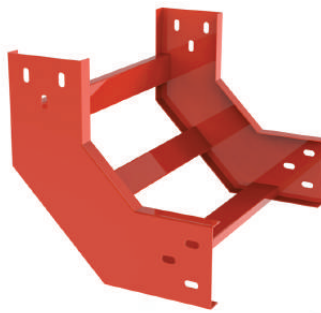
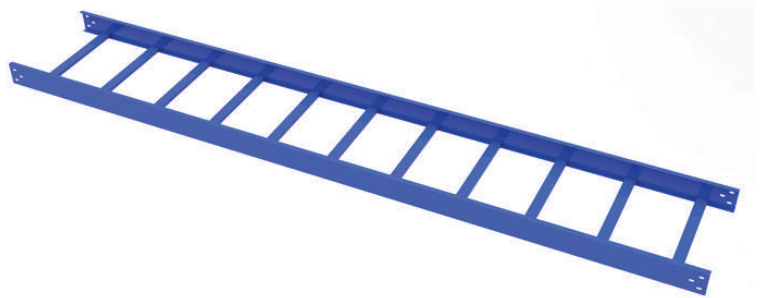
CÔNG TY TNHH ĐIỆN - ĐIỆN TỬ 3C

**3CElectric**

Computer | Communication | Control | Electric | Electronics | Energy

# Cable Tray

# Cable Ladder



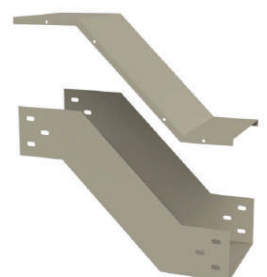
3CElectric® Công Ty TNHH Điện - Điện Tử 3C



3CElectric® Công Ty TNHH Điện - Điện Tử 3C



3CElectric® Công Ty TNHH Điện - Điện Tử 3C



3CElectric® Công Ty TNHH Điện - Điện Tử 3C



3CElectric® Công Ty TNHH Điện - Điện Tử 3C



3CElectric® Công Ty TNHH Điện - Điện Tử 3C



QR-Code: [www.3ce.vn](http://www.3ce.vn)  
HOTLINE : 0902.685.695

# Cable Tray Cable Ladder

---

Cable ladder - Cable tray is a product specifically designed for factories and enterprises. Automation lines in factories, power stations, transformer stations, large projects such as apartments, hospitals, shopping centers....



## Category

---

## Page

1. General introduction	1
2. Advantages of ladders and cable trays manufactured by 3CElectric	2
3. Types of ladders - cable trays	3
4. Common specifications	5
5. Typical cable tray and ladder layout	6
6. Cable ladder	7
7. Cable trays	15
8. Accessories	25





## General introduction

Cable Ladder - Cable Tray's main task is to cover and protect the entire internal electrical cable system, connecting from the main electrical cabinet, power distribution cabinet to machinery and equipment locations. necessary. With the ability to flexibly assemble parts, it is very easy to install at the construction site.

In addition, electric cable ladders also have a decorative effect, creating a neat space for the entire factory's electrical system. With that advantage, powder coated cable ladders are an indispensable product for electrical systems in factories, plants, buildings...

### General structure

The cable ladder is made of CT3 steel. There are leather designs in various sizes, thicknesses, and types.

Regarding cable ladder design, there are 6 main parts, designed to fit most construction structures.. Bao gồm thang, cắt nối chữ T, L, X, co lên, co xuống.

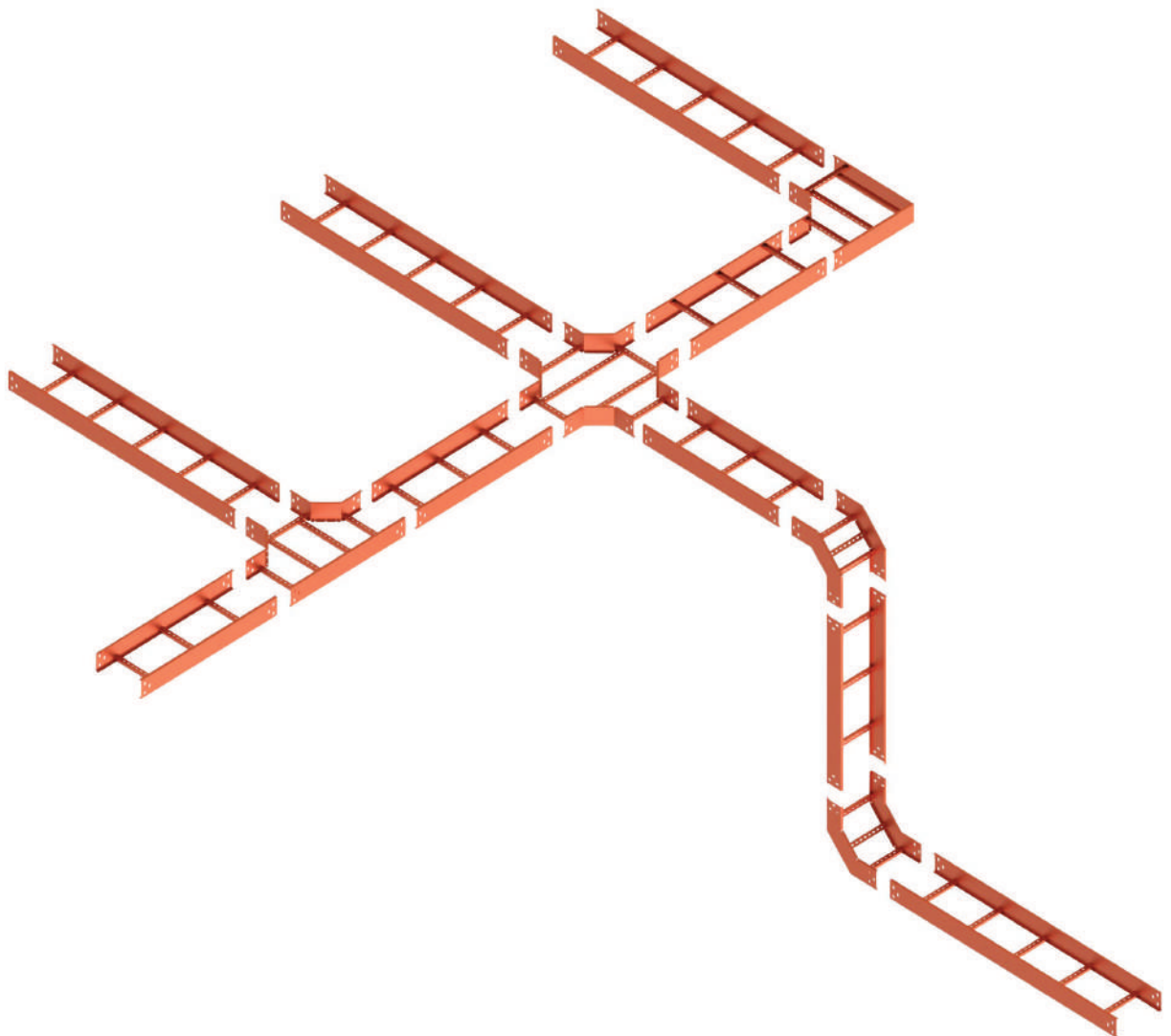
### Advantage

1. Diverse types, designs, and colors to meet the maximum requirements of the project.
2. Abrasion resistance and high load capacity.
3. Easy installation. Does not require high expertise.
4. Reusable and environmentally friendly.

## Advantages of ladders and cable trays manufactured by 3CElectric

3C Electrical - Electronics Company Limited, branded 3CElectric. We are proud to be the leading unit in Vietnam manufacturing and distributing cable ladder products. We have more than 20 years of experience in the manufacturing and construction of mechanical products. With a system of branch offices in all 3 regions: North - Central - South.

The main production factory of more than 30,000 square meters in Thach That - Hanoi is continuously upgraded and invested in production lines as well as machinery and human systems. Able to produce large quantities quickly while still meeting maximum quality standards.



## Types of ladders - cable trays

In order to maximize the application needs of the product, today's cable tray ladders are manufactured in 4 main types: Powder coating, ZAM corrugated iron, Hot-dip galvanizing and Electrolytic plating.

Each product has its own unique characteristics and advantages. Suitable for many uses as well as practical installation locations. Able to withstand harsh environmental conditions.



# 1

### Electrostatic Painting

This is a cable ladder product line that is painted with a layer of electrostatic paint to treat the surface and covered with a layer of electrostatic paint to finish the surface. Diverse colors such as orange, blue, gray,... Used for indoor projects.



# 2

### Hot Dip Galvanizing

As a high-end cable ladder product line, during the process, galvanizing technology will be applied to safely and uniformly plate the surface of the device with the goal of preventing oxidation and metal corrosion by acids or outdoor environments.





# 3

## ZAM steel

This is a cable ladder product made directly from ZAM corrugated iron. Researched and developed to improve the corrosion resistance of steel materials in harsh environments. The outstanding advantages of ZAM corrugated iron are longer life and lower maintenance costs.



# 4

## Electrolytic Zinc Plating

Electrolytic galvanizing is the oldest galvanizing method and is used to protect the inner metal layer from corrosion and rust. Electrolytic zinc plating has the advantage of high adhesion, often using the cold spray plating method.





## Common Specifications

- Steel plates are manufactured according to Japanese Standard JIS G3141
- 3C straight cable ladders are manufactured with a standard length of 3m/1 bar.
- Height H: 50mm - 700mm
- Width W: 30mm - 200mm
- Material thickness (mm): 0.8 - 1.0 - 1.2 - 1.5 - 2.0 - 2.5
- Color: Gray, Cream, Orange, Blue or color of material, plating.
- Types of surface plating: Powder coating, hot-dip galvanizing, ZAM corrugated iron, electrolytic galvanizing



## Typical cable tray and ladder layout

01. Straight cable tray

02. Cover

03. Horizontal Elbow

04. Horizontal Tee

05. Horizontal Cross / Equal Cross

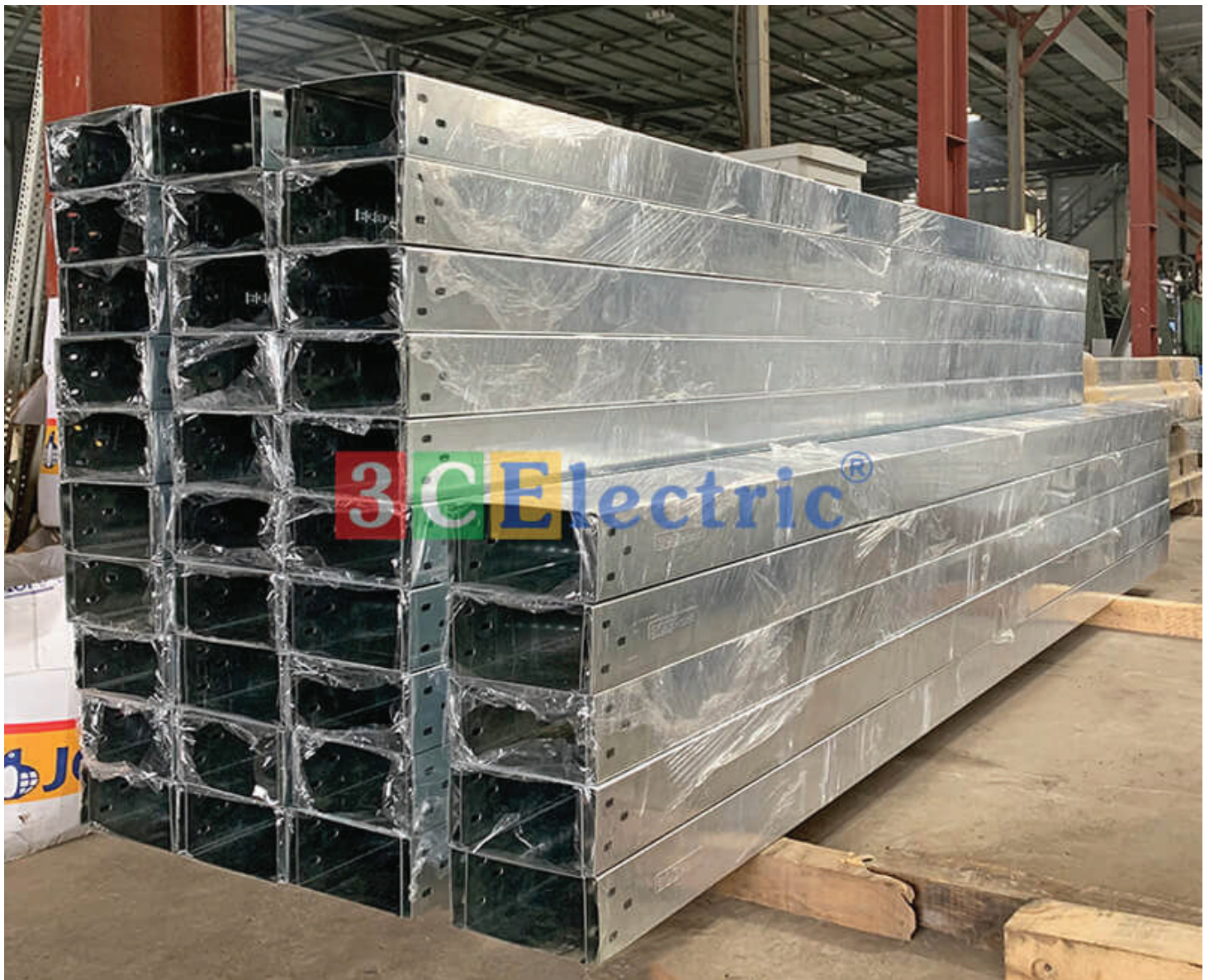
06. Outside Riser / External Riser

07. Inside Riser / Internal Riser

08. Concentric Reduction Coupling

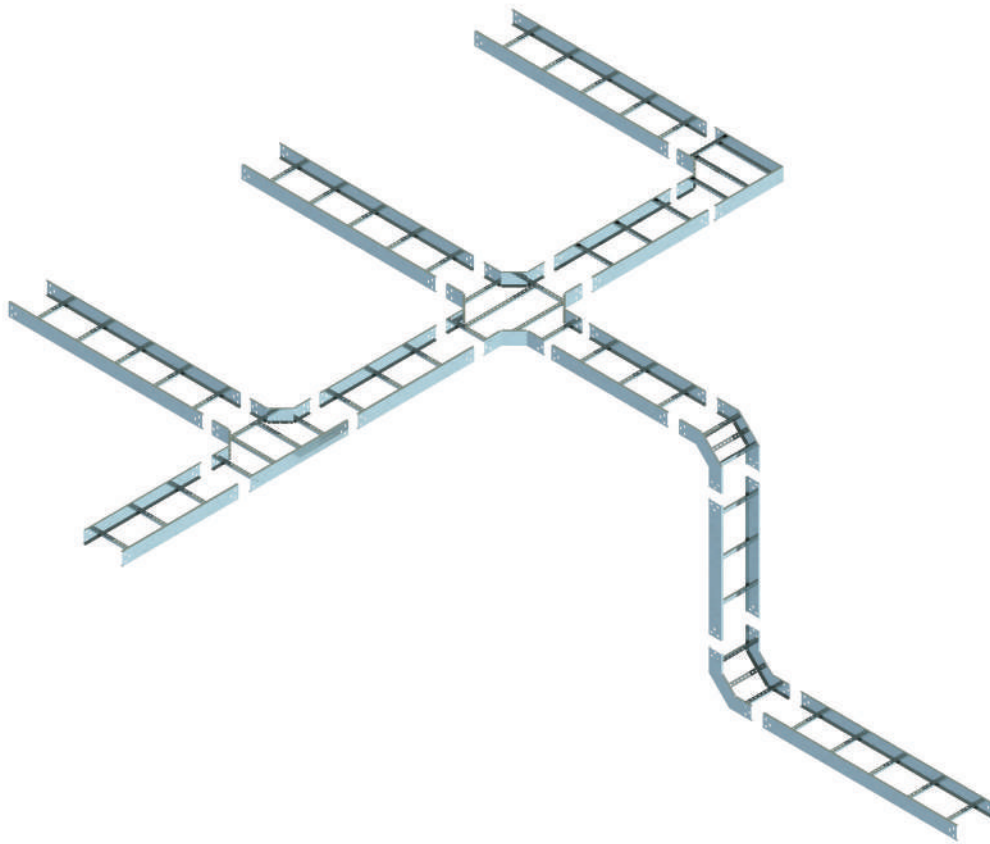
Straight Reducer

09. Left / Right Reduction Coupling



# Cable ladder

---



Cable ladders are also known as electric cable ladders. The English name is Cable Ladder. Cable ladder is the load-bearing structure of the electric cable system. Used to make ladders to support and protect, Making paths for cables and wires in industrial projects...

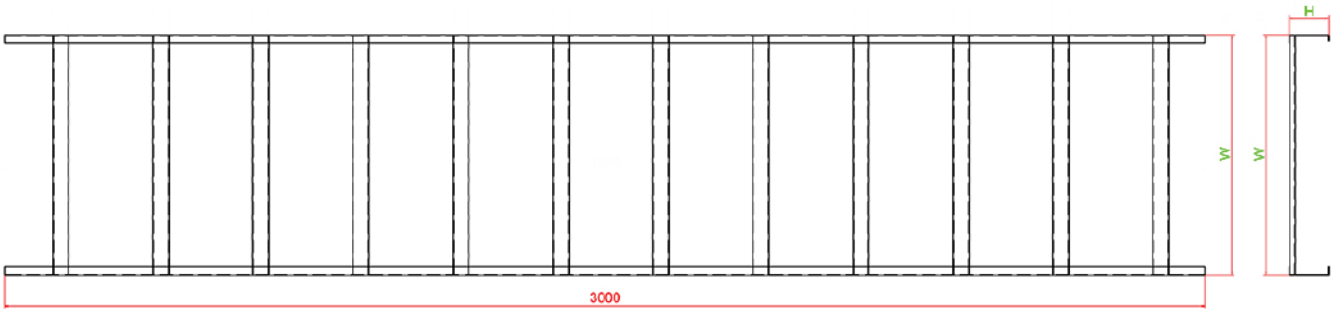
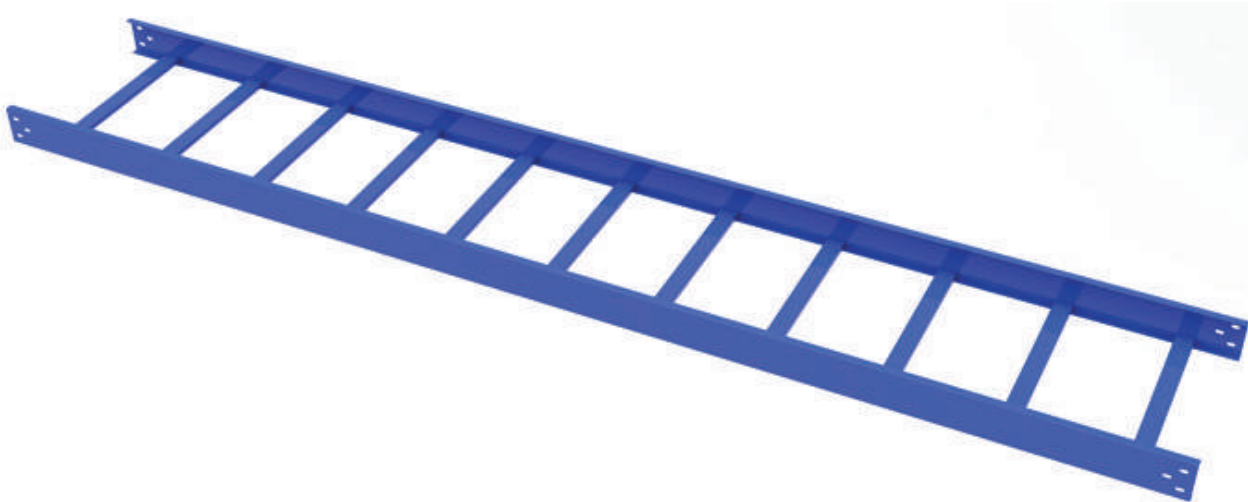
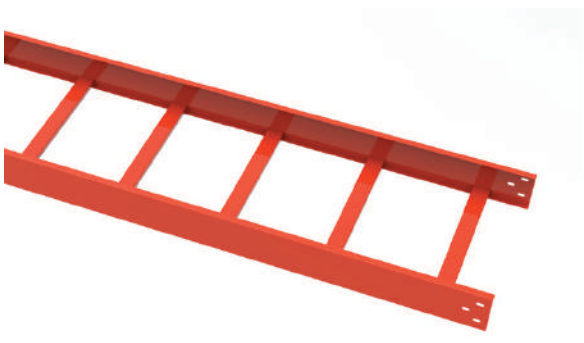
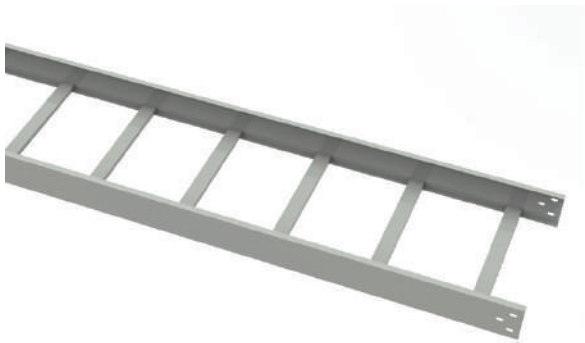
Using this product line helps the unit During construction, the project saves material costs, instead of using other types of round pipes. Simple installation, convenient to change and expand. Can be used indoors, outdoors, in many different weather conditions...

## How to set 3C product code

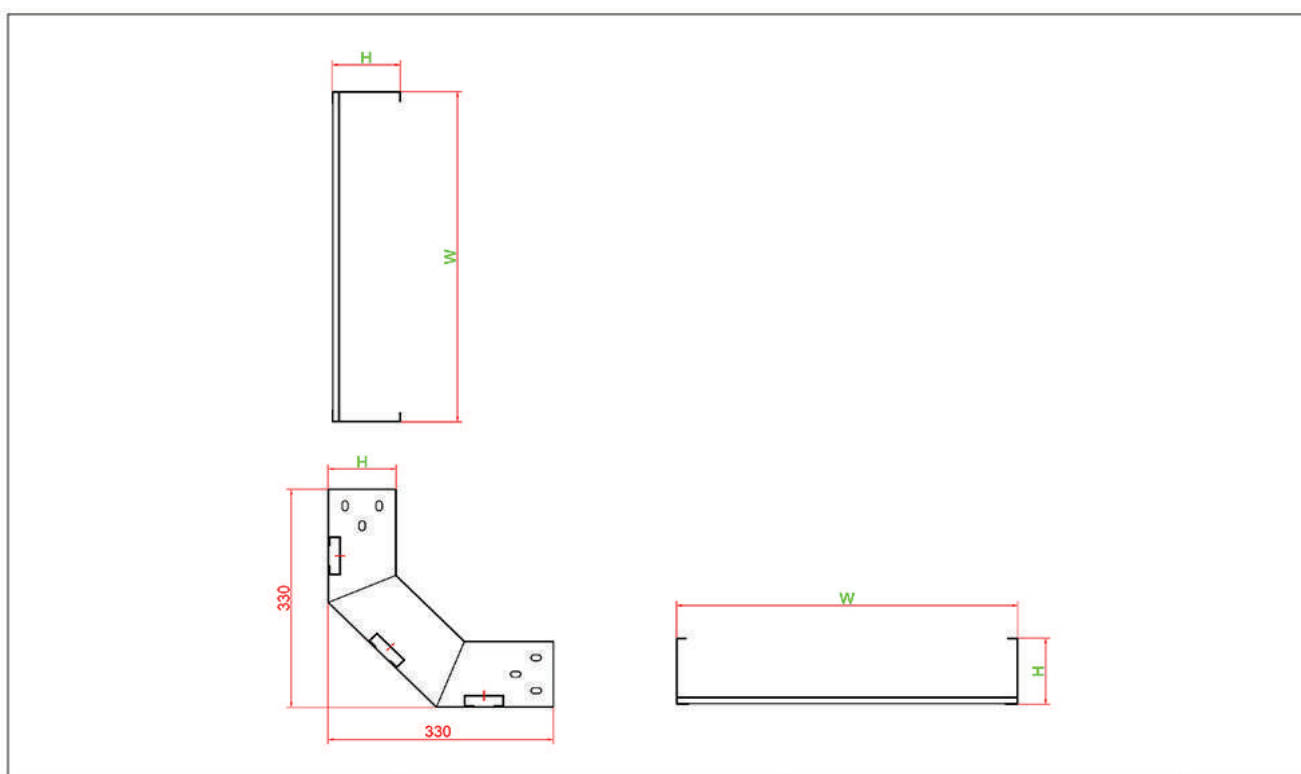
1. Cable tray product code is 3C-TU
2. Product code must not exceed 24 characters
3. All product codes start with: 3C - SP type - SP size - coating type.  
For example, powder coated cable ladder product: 3C-TU150x50-S1.2
4. S code powder coating
5. HOT DIP galvanized with the letter "M" instead of "S"
6. ELECTROLYTIC zinc plating with the letter "Z" instead of "S"
7. TOLE ZAM the character "ZAM" replaces "S"
8. For products with different code standards that cannot be specified, please contact the technician.



Code			
Electrostatic Painting	Hot Dip Galvanizing	ZAM steel	Electrolytic zinc plating
3C-TU(WxH)-S	3C-TU(WxH)-M	3C-TU(WxH)-ZAM	3C-TU(WxH)-Z

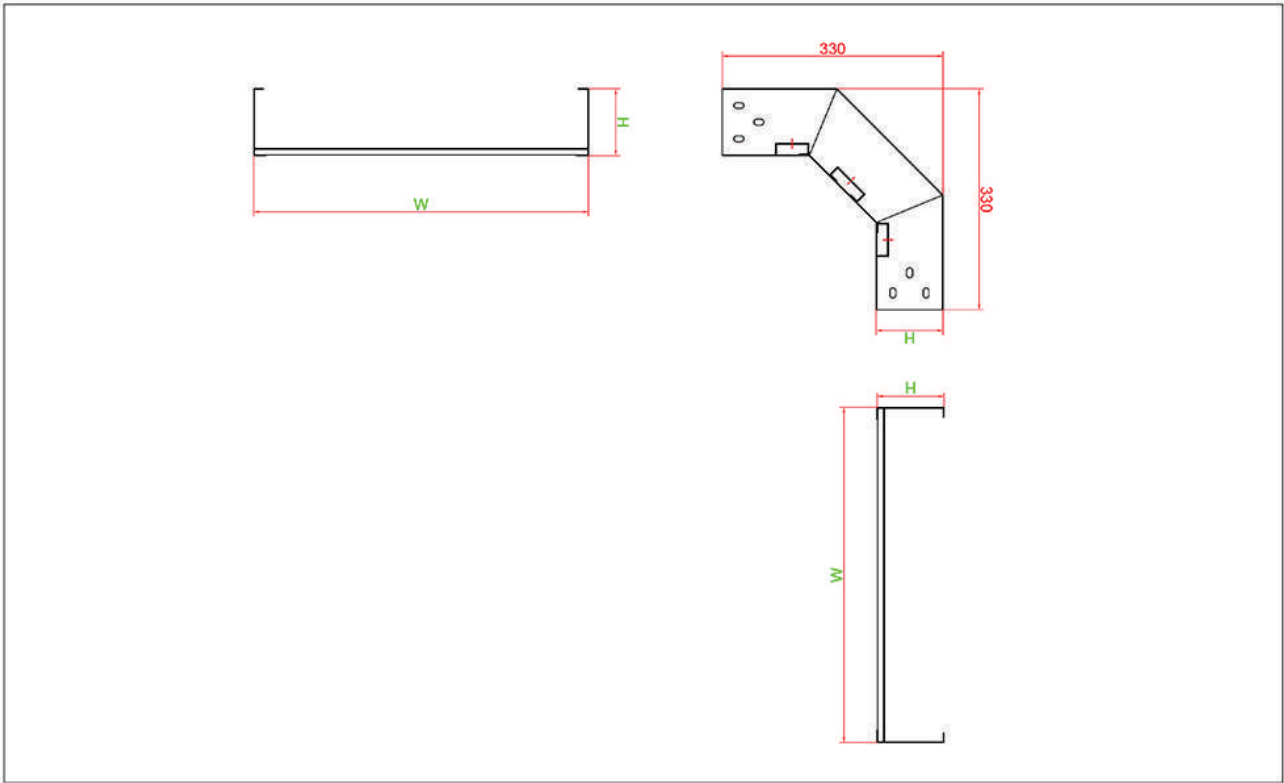
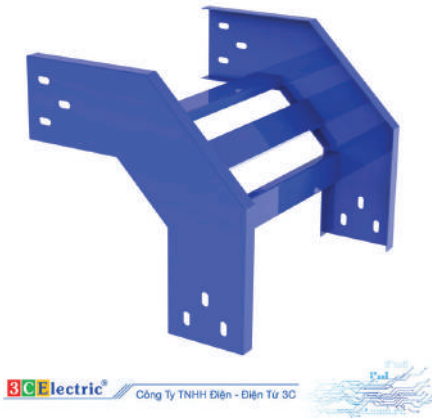
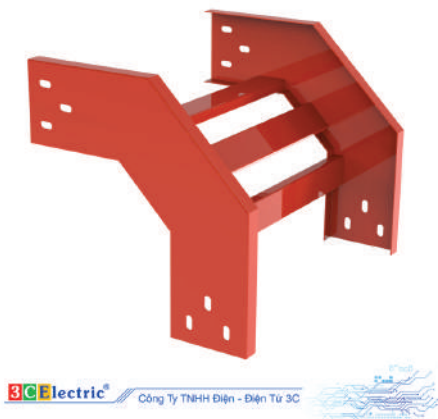


Code			
Electrostatic Painting	Hot Dip Galvanizing	ZAM steel	Electrolytic zinc plating
3C-CLTU(WxH)-S	3C-CLTU(WxH)-M	3C-CLTU(WxH)-ZAM	3C-CLTU(WxH)-Z

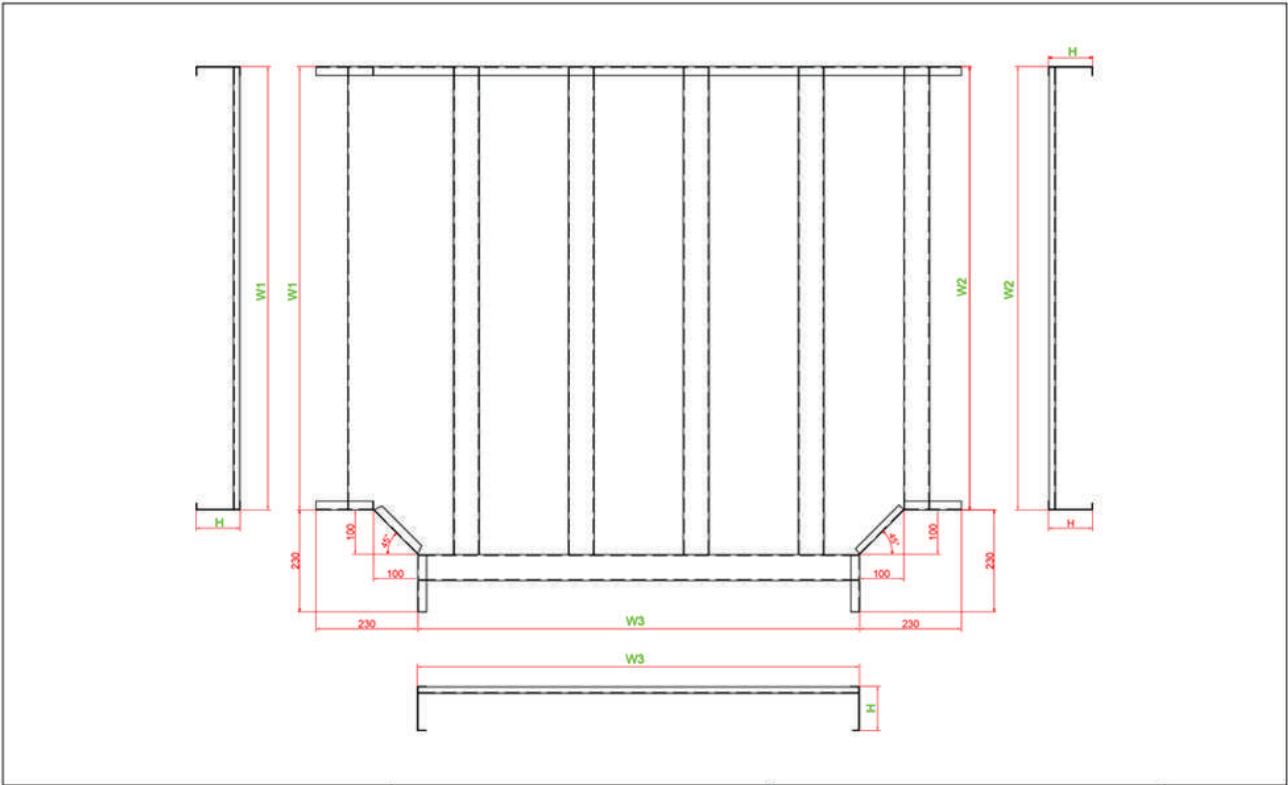
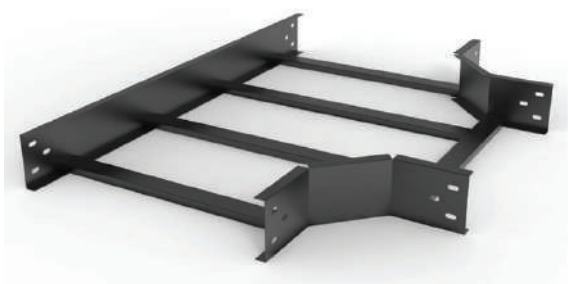
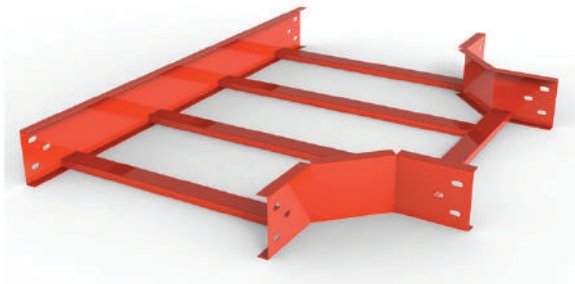




Code			
Electrostatic Painting	Hot Dip Galvanizing	ZAM steel	Electrolytic zinc plating
3C-CXTU(WxH)-S	3C-CXTU(WxH)-M	3C-CXTU(WxH)-ZAM	3C-CXTU(WxH)-Z

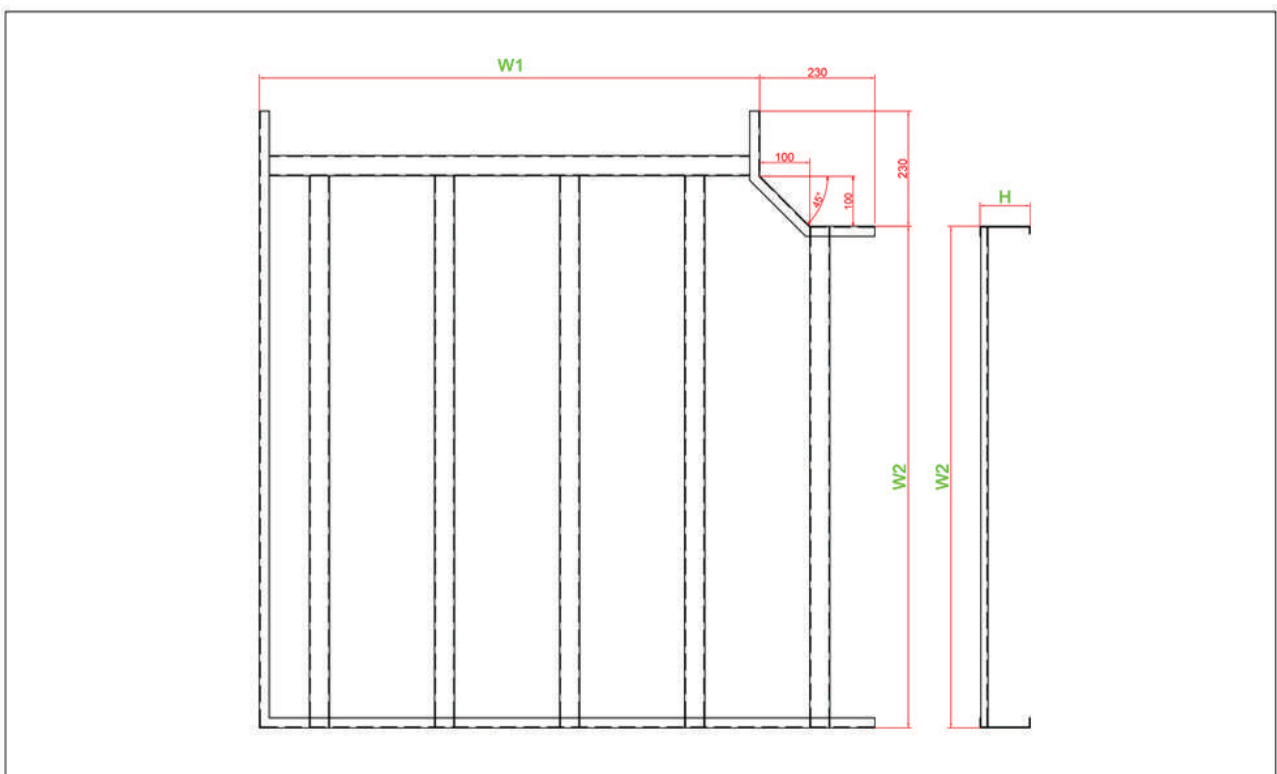


Code			
Electrostatic Painting	Hot Dip Galvanizing	ZAM steel	Electrolytic zinc plating
3C-TTU(WxH)-S	3C-TTU(WxH)-M	3C-TTU(WxH)-ZAM	3C-TTU(WxH)-Z

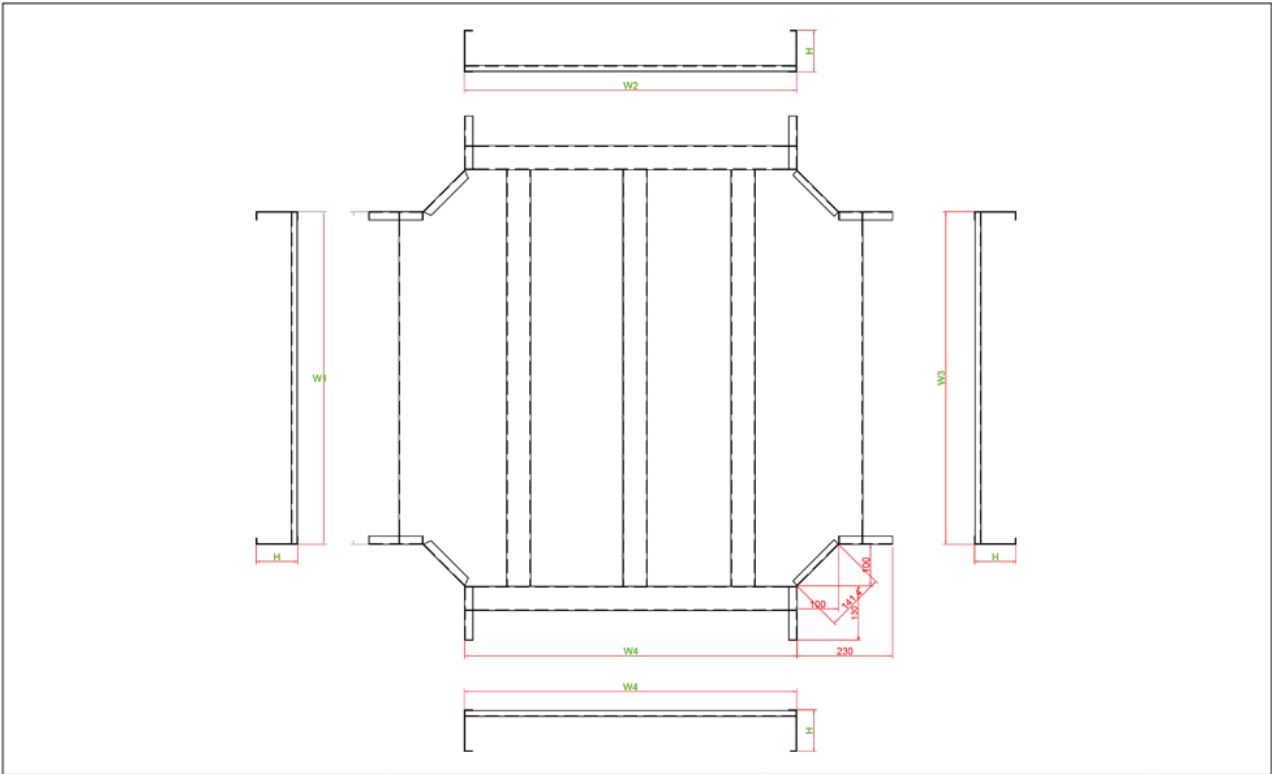
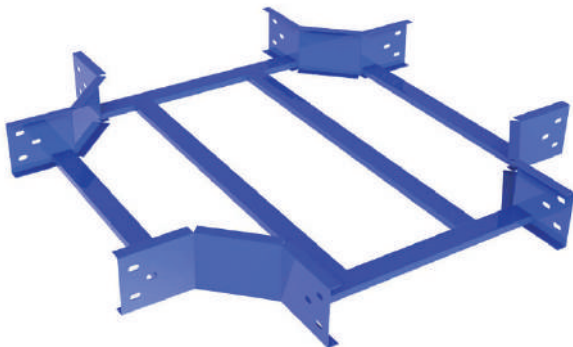
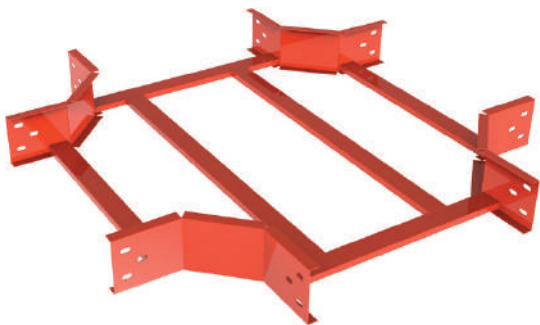




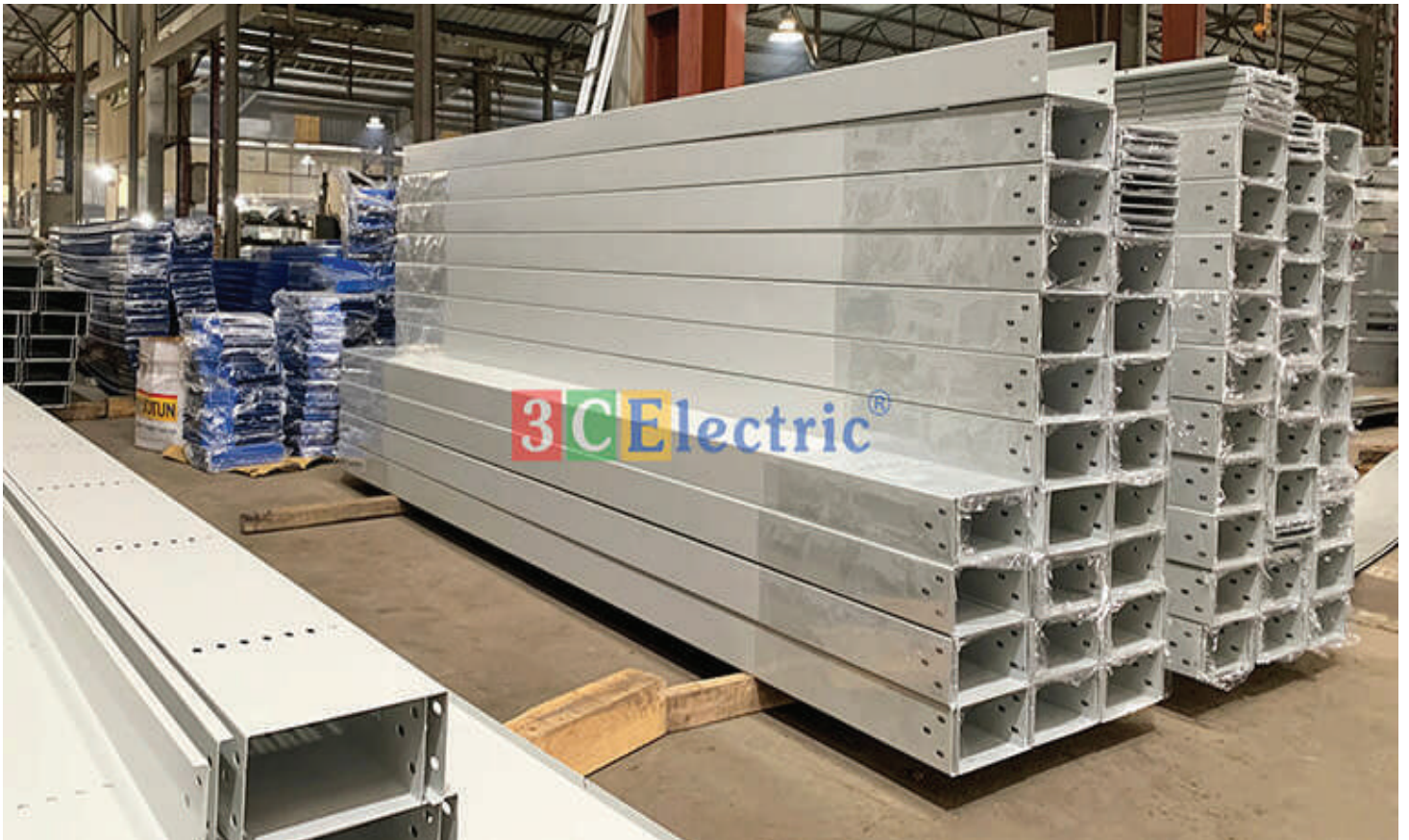
Code			
Electrostatic Painting	Hot Dip Galvanizing	ZAM steel	Electrolytic zinc plating
3C-LTU(WxH)-S	3C-LTU(WxH)-M	3C-LTU(WxH)-ZAM	3C-LTU(WxH)-Z



Code			
Electrostatic Painting	Hot Dip Galvanizing	ZAM steel	Electrolytic zinc plating
3C-XTU(WxH)-S	3C-XTU(WxH)-M	3C-XTU(WxH)-ZAM	3C-XTU(WxH)-Z

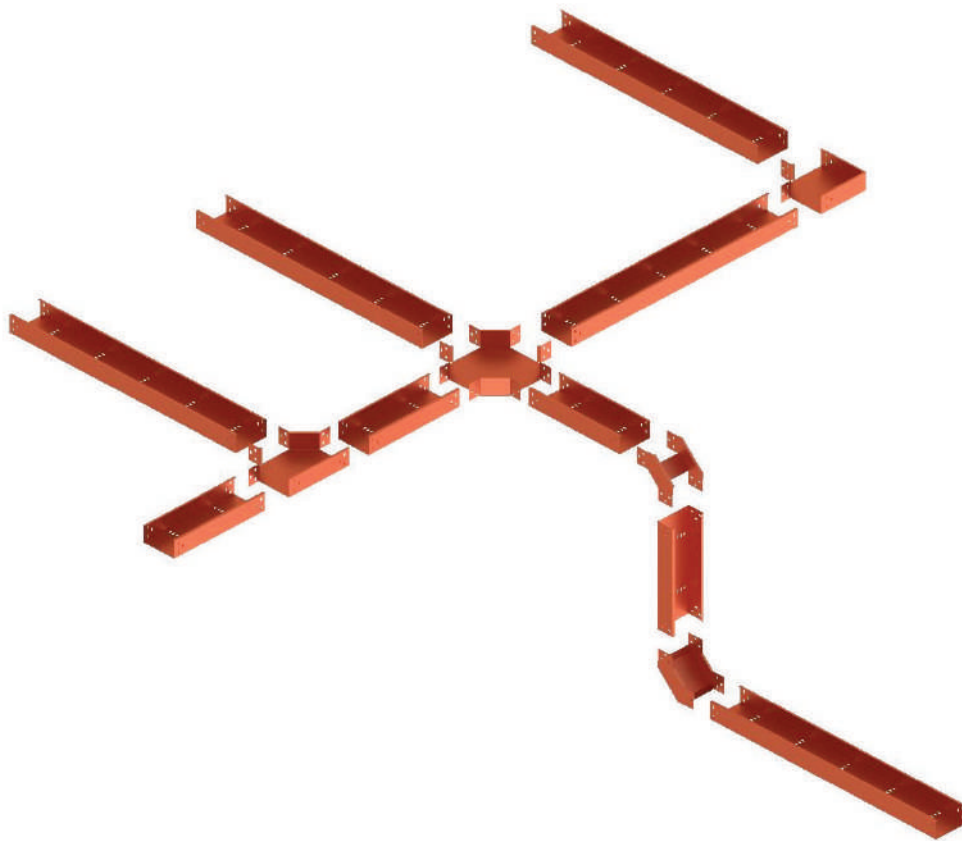








# Cable Tray



Cable tray is also known as electrical tray. The English name is Cable Tray or Trunking, which is a trough system that supports, contains and protects conduct electricity, power cables, and network cables external factors influence,

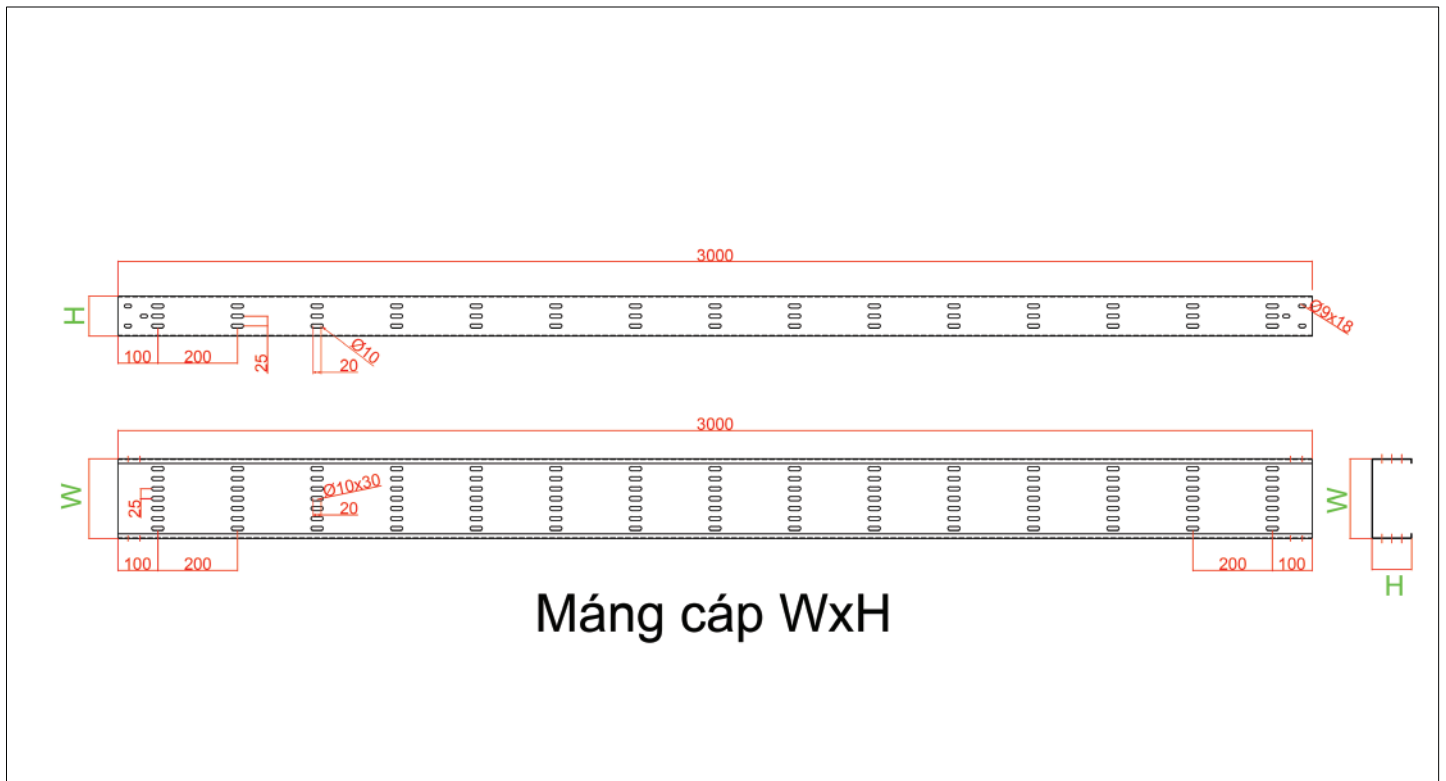
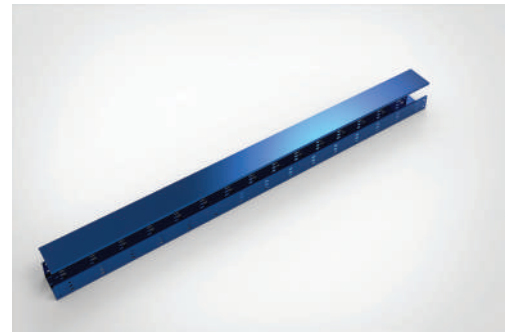
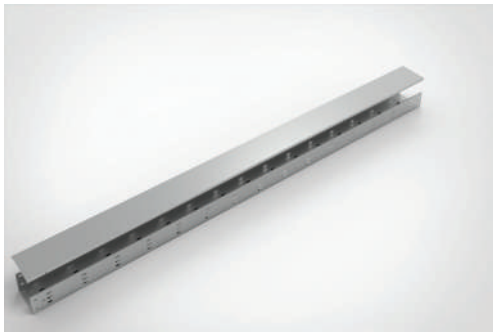
At the same time, it also increases the lifespan of the product types of wires, creating safety for users, as well as the project install them. Often used for installation in high-rise buildings, offices, shopping centers, factories, workshops...

## How to set 3C product code

1. Cable tray product code is 3C-M
2. Product code must not exceed 24 characters
3. All product codes start with: 3C - SP type - SP size - coating type.  
Example of powder coated cable tray product:  
3C-M150x50-S1.2
4. S code powder coating
5. HOT DIP galvanized with the letter "M" instead of "S"
6. ELECTROLYTIC zinc plating with the letter "Z" instead of "S"
7. TOLE ZAM the character "ZAM" replaces "S"
8. For products with differences that cannot be standardized, codes will be based on specific production drawings.

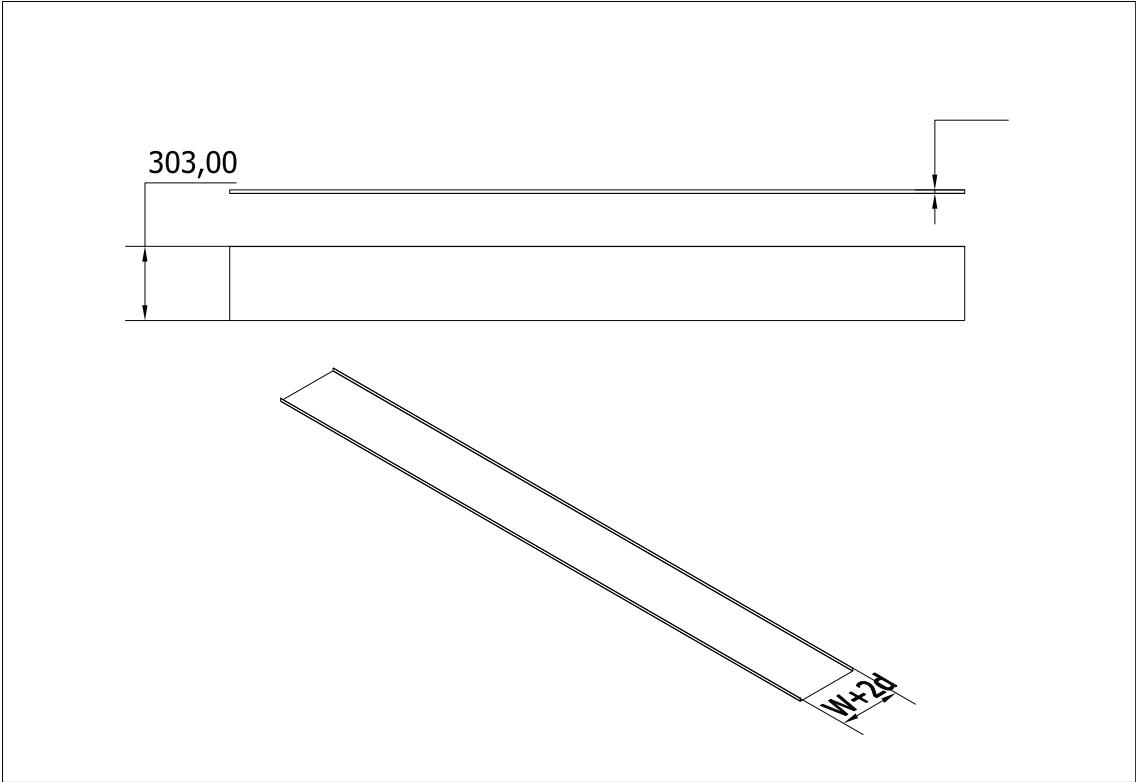
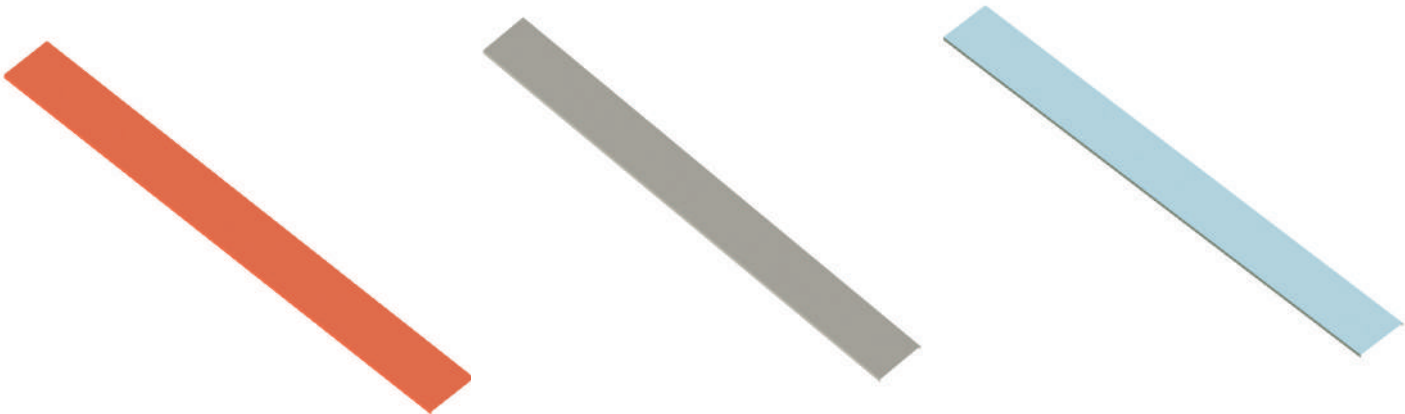
## Straight cable tray

Code			
Electrostatic Painting	Hot Dip Galvanizing	ZAM steel	Electrolytic zinc plating
3C-M(WxH)-S	3C-M(WxH)-M	3C-M(WxH)-ZAM	3C-M(WxH)-Z



Cover - cable tray

Code			
Electrostatic Painting	Hot Dip Galvanizing	ZAM steel	Electrolytic zinc plating
3C-NU(WxH)-S	3C-NU(WxH)-M	3C-NU(WxH)-ZAM	3C-NU(WxH)-Z

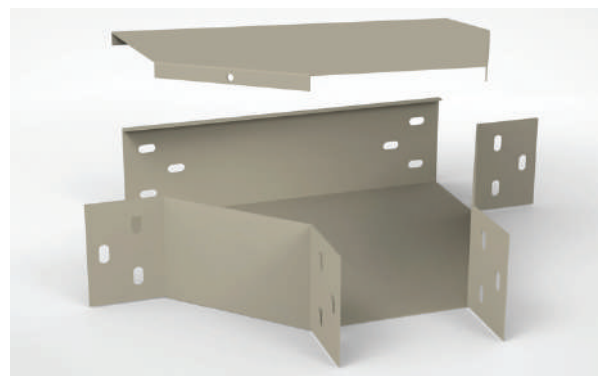




Code			
Electrostatic Painting	Hot Dip Galvanizing	ZAM steel	Electrolytic zinc plating
3C-TM(WxH)-S	3C-TM(WxH)-M	3C-TM(WxH)-ZAM	3C-TM(WxH)-Z



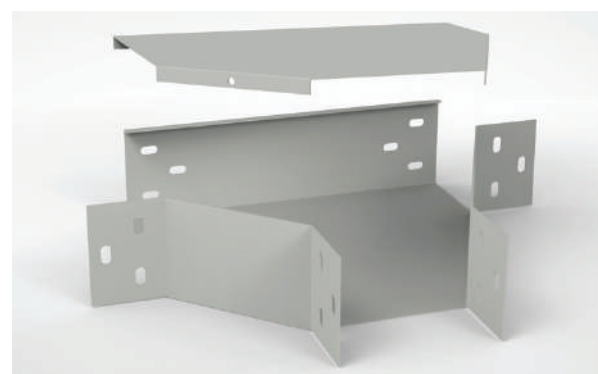
**3CElectric®** Công Ty TNHH Điện - Điện Tử 3C



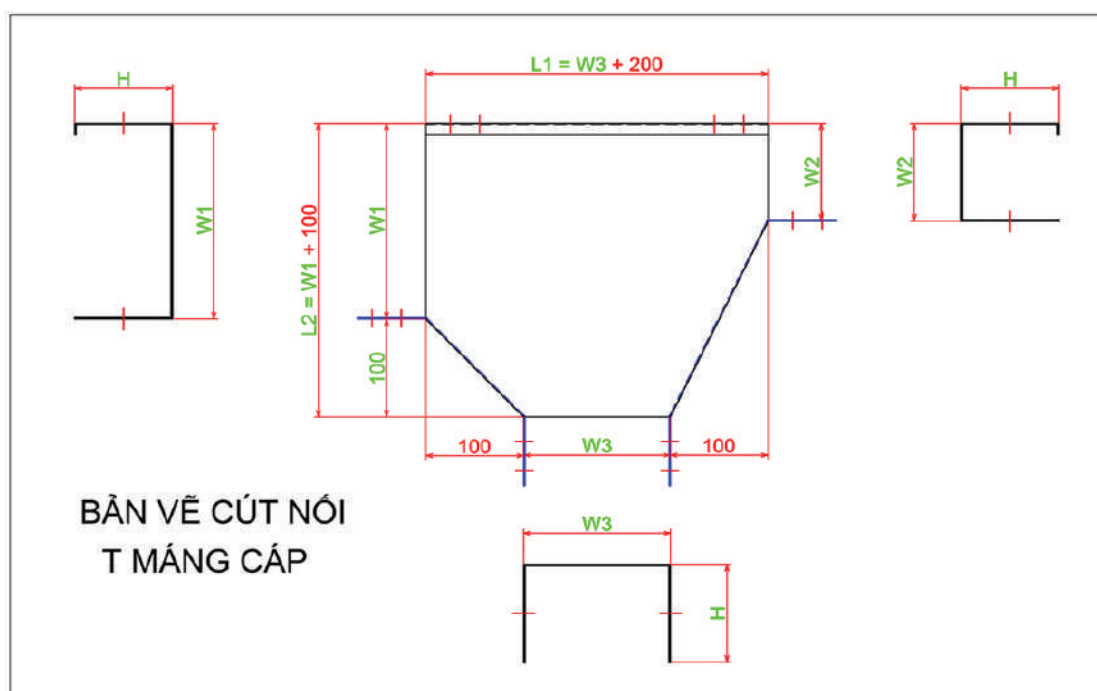
**3CElectric®** Công Ty TNHH Điện - Điện Tử 3C



**3CElectric®** Công Ty TNHH Điện - Điện Tử 3C



**3CElectric®** Công Ty TNHH Điện - Điện Tử 3C



Code			
Electrostatic Painting	Hot Dip Galvanizing	ZAM steel	Electrolytic zinc plating
3C-LM(WxH)-S	3C-LM(WxH)-M	3C-LM(WxH)-ZAM	3C-LM(WxH)-Z



**3CElectric®** Công Ty TNHH Điện - Điện Tử 3C



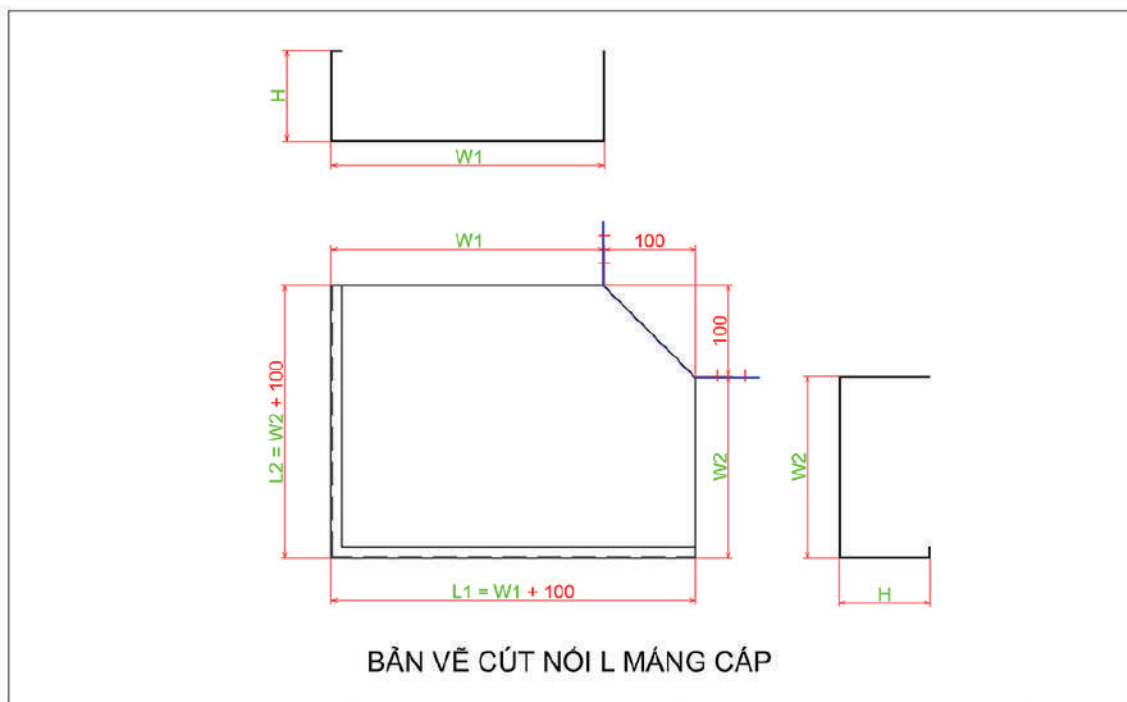
**3CElectric®** Công Ty TNHH Điện - Điện Tử 3C



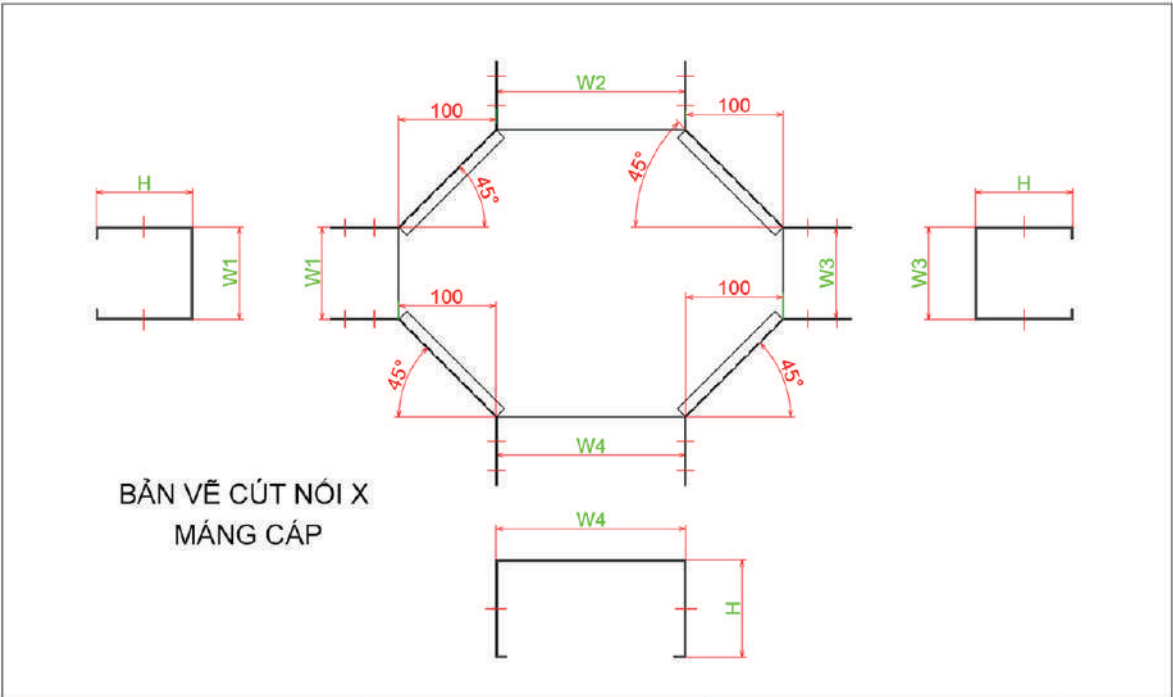
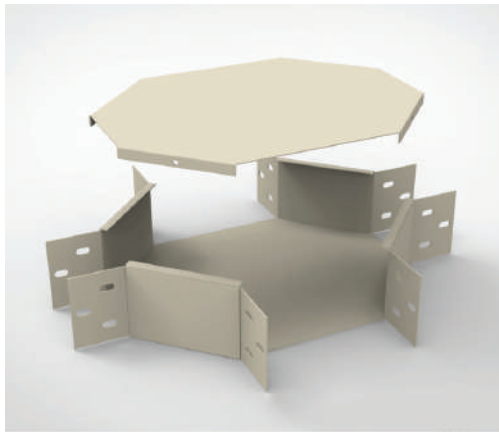
**3CElectric®** Công Ty TNHH Điện - Điện Tử 3C



**3CElectric®** Công Ty TNHH Điện - Điện Tử 3C

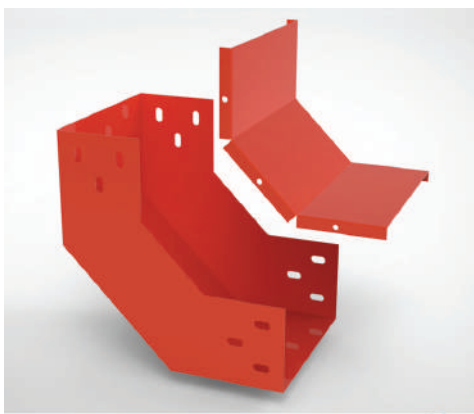
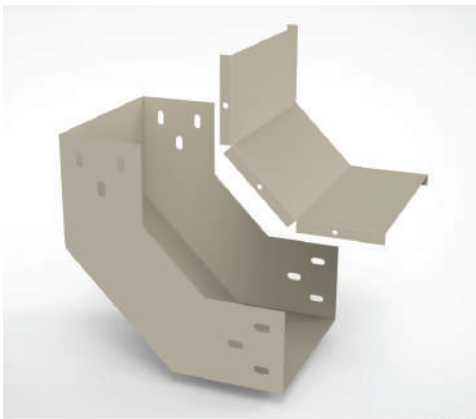
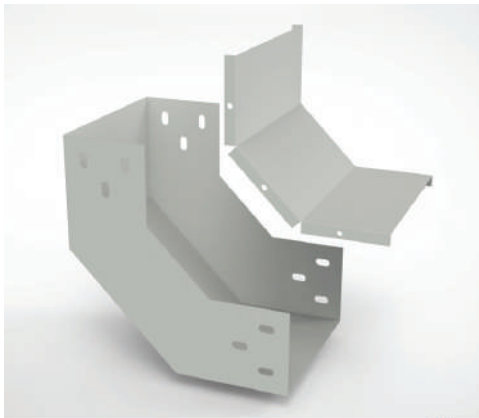
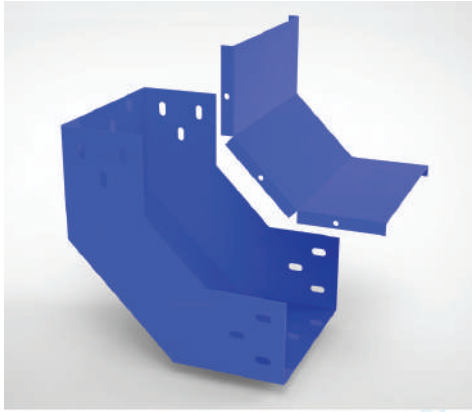


Code			
Electrostatic Painting	Hot Dip Galvanizing	ZAM steel	Electrolytic zinc plating
3C-ZM(WxH)-S	3C-ZM(WxH)-M	3C-ZM(WxH)-ZAM	3C-ZM(WxH)-Z

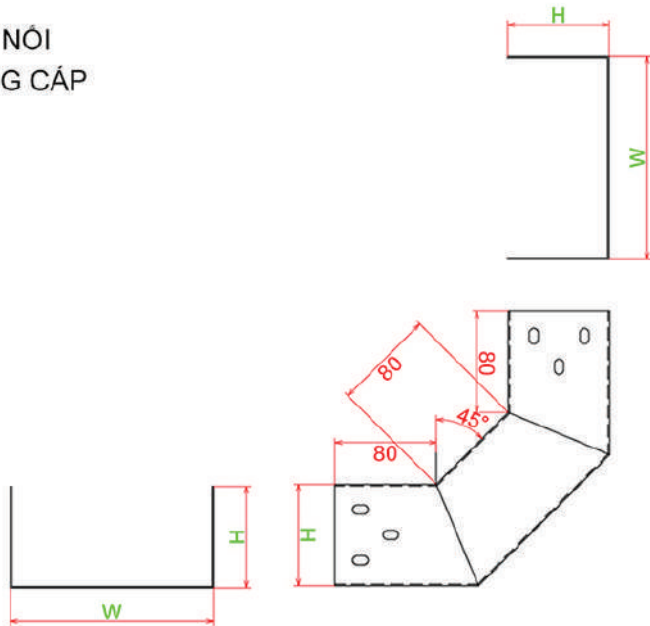




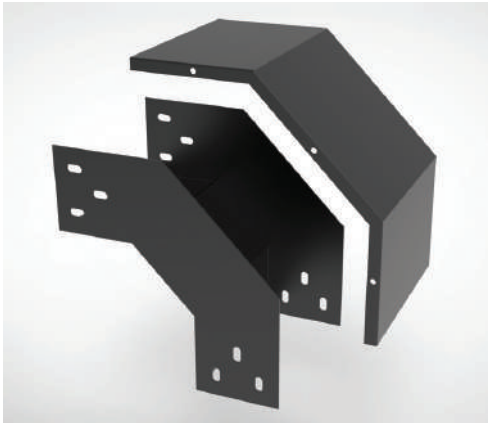
Code			
Electrostatic Painting	Hot Dip Galvanizing	ZAM steel	Electrolytic zinc plating
3C-CLM(WxH)-S	3C-CLM(WxH)-M	3C-CLM(WxH)-ZAM	3C-CLM(WxH)-Z



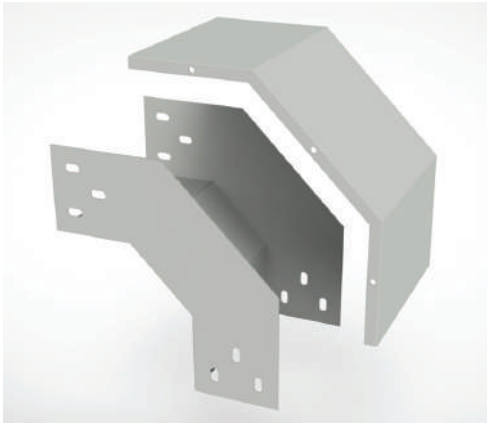
BẢN VẼ CÚT NÔI  
CÓ LÊN MĂNG CÁP



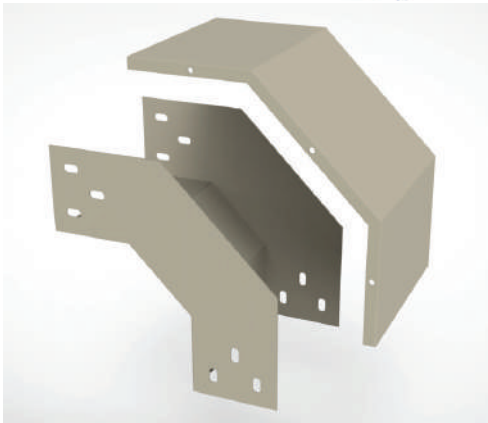
Code			
Electrostatic Painting	Hot Dip Galvanizing	ZAM steel	Electrolytic zinc plating
3C-CXM(WxH)-S	3C-CXM(WxH)-M	3C-CXM(WxH)-ZAM	3C-CXM(WxH)-Z



3CElectric® Công Ty TNHH Điện - Điện Tử 3C



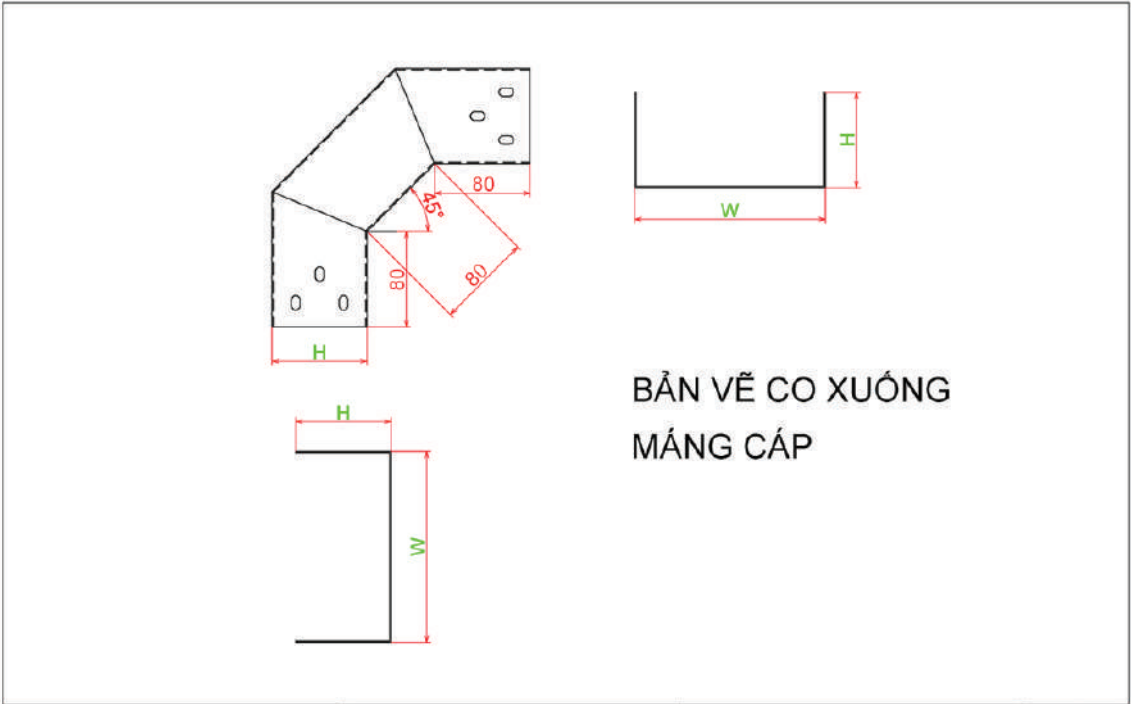
3CElectric® Công Ty TNHH Điện - Điện Tử 3C



3CElectric® Công Ty TNHH Điện - Điện Tử 3C



3CElectric® Công Ty TNHH Điện - Điện Tử 3C



Code			
Electrostatic Painting	Hot Dip Galvanizing	ZAM steel	Electrolytic zinc plating
3C-ZM(WxH)-S	3C-ZM(WxH)-M	3C-ZM(WxH)-ZAM	3C-ZM(WxH)-Z



**3CElectric®** Công Ty TNHH Điện - Điện Tử 3C



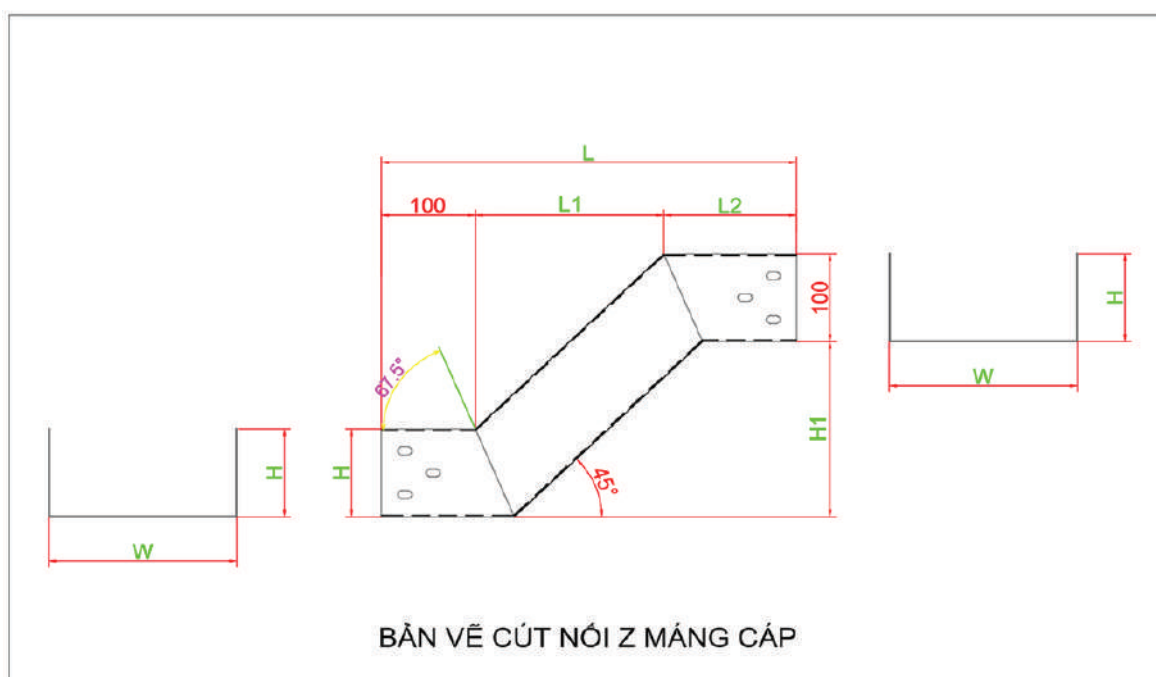
**3CElectric®** Công Ty TNHH Điện - Điện Tử 3C



**3CElectric®** Công Ty TNHH Điện - Điện Tử 3C

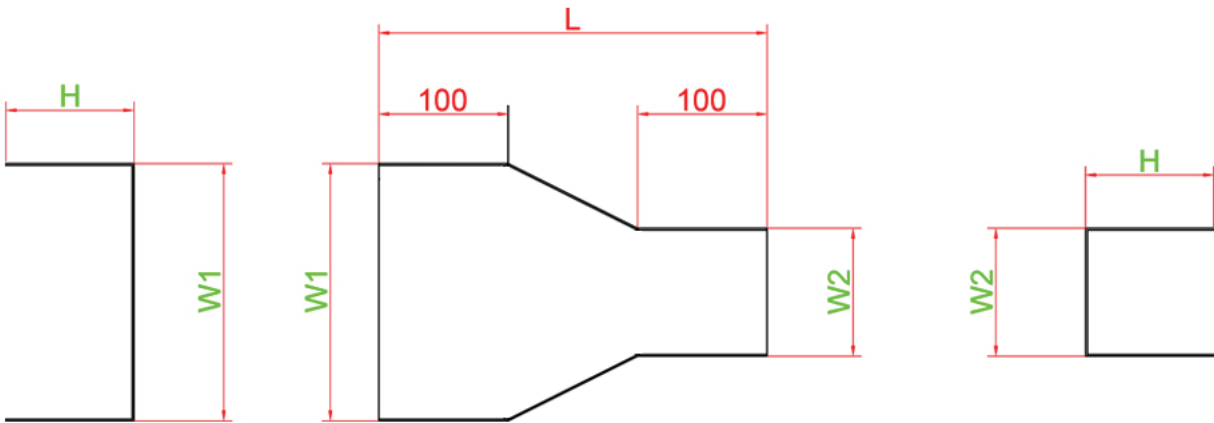
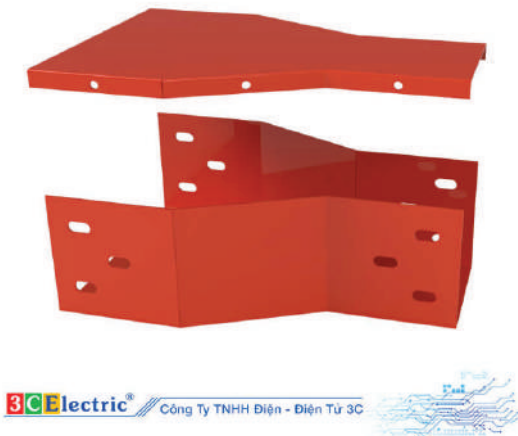


**3CElectric®** Công Ty TNHH Điện - Điện Tử 3C





Code			
Electrostatic Painting	Hot Dip Galvanizing	ZAM steel	Electrolytic zinc plating
3C-GM(WxH)-S	3C-GM(WxH)-M	3C-GM(WxH)-ZAM	3C-GM(WxH)-Z



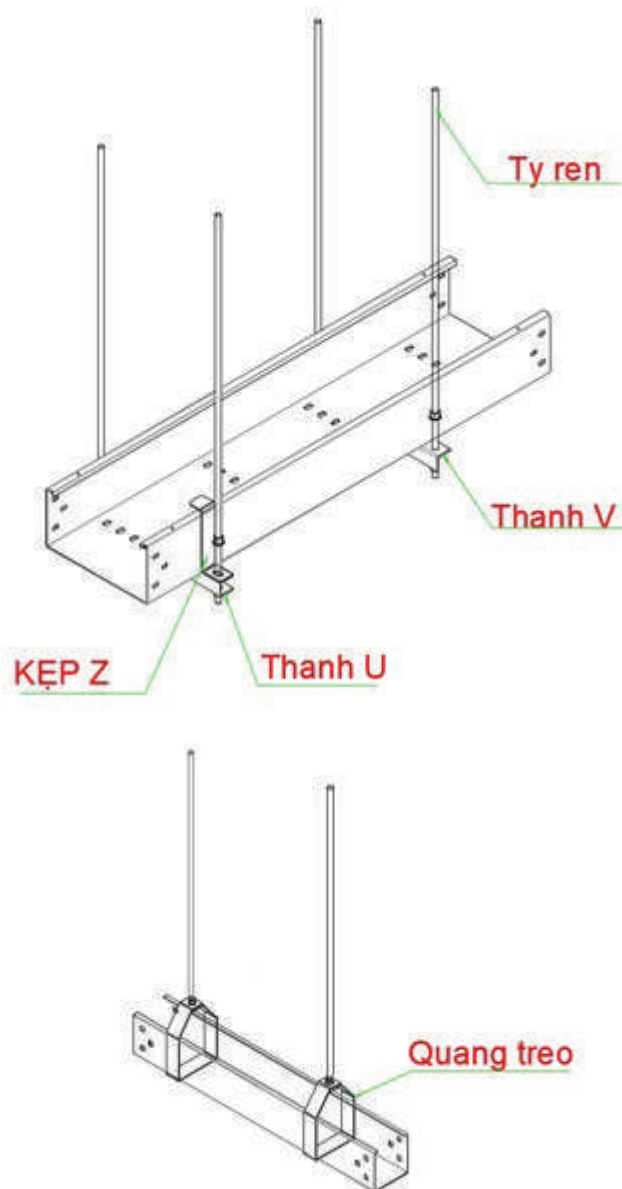
BẢN VẼ TĂNG/ GIẢM MÁNG CÁP

## Accessories - Cable tray / Cable Ladder

Ladder - Cable Tray Accessories are equipment and supplies that come with the installation of cable tray ladders. Accessories are used to connect ladders or cable trays into shapes suitable for the environment and terrain.

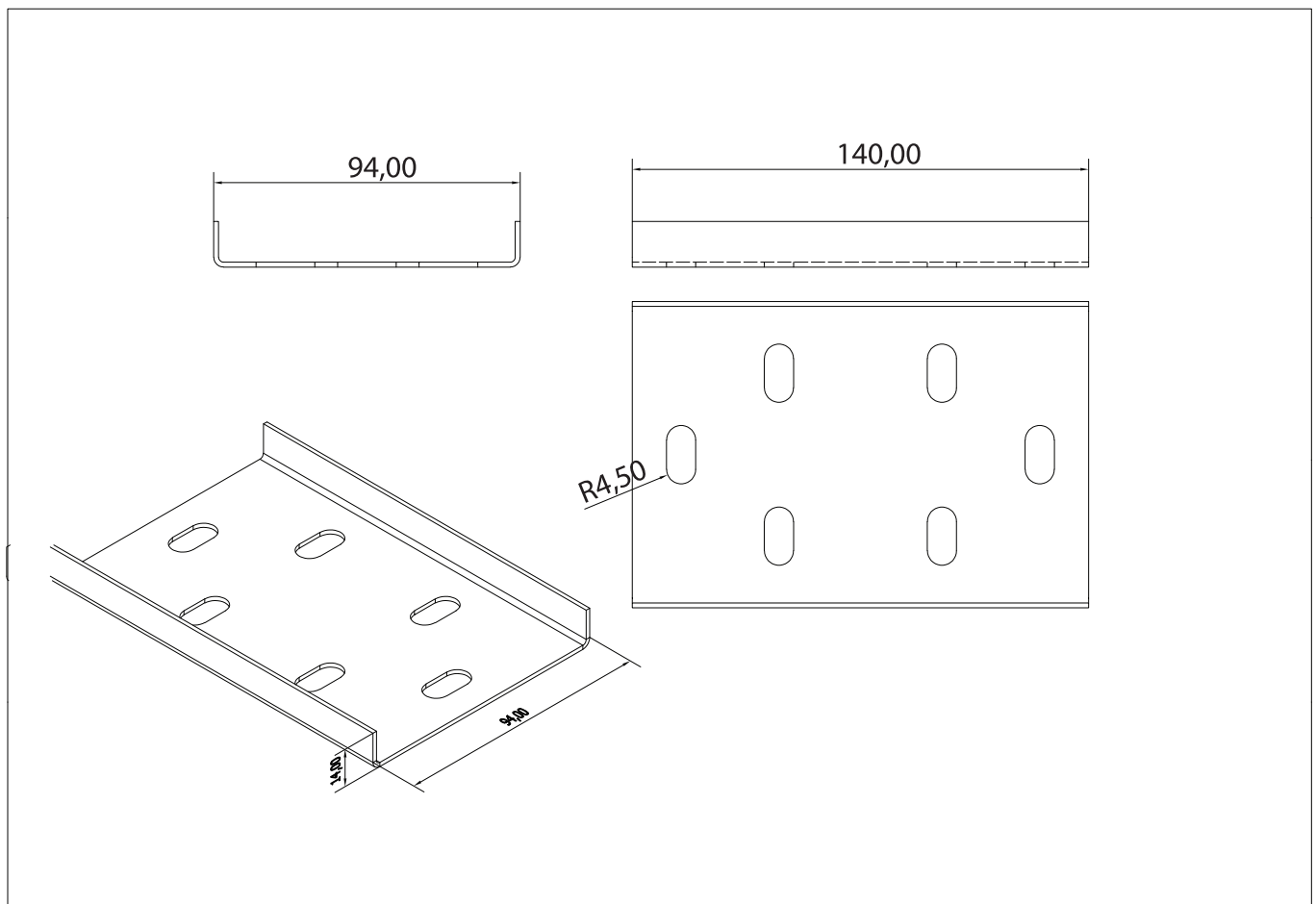
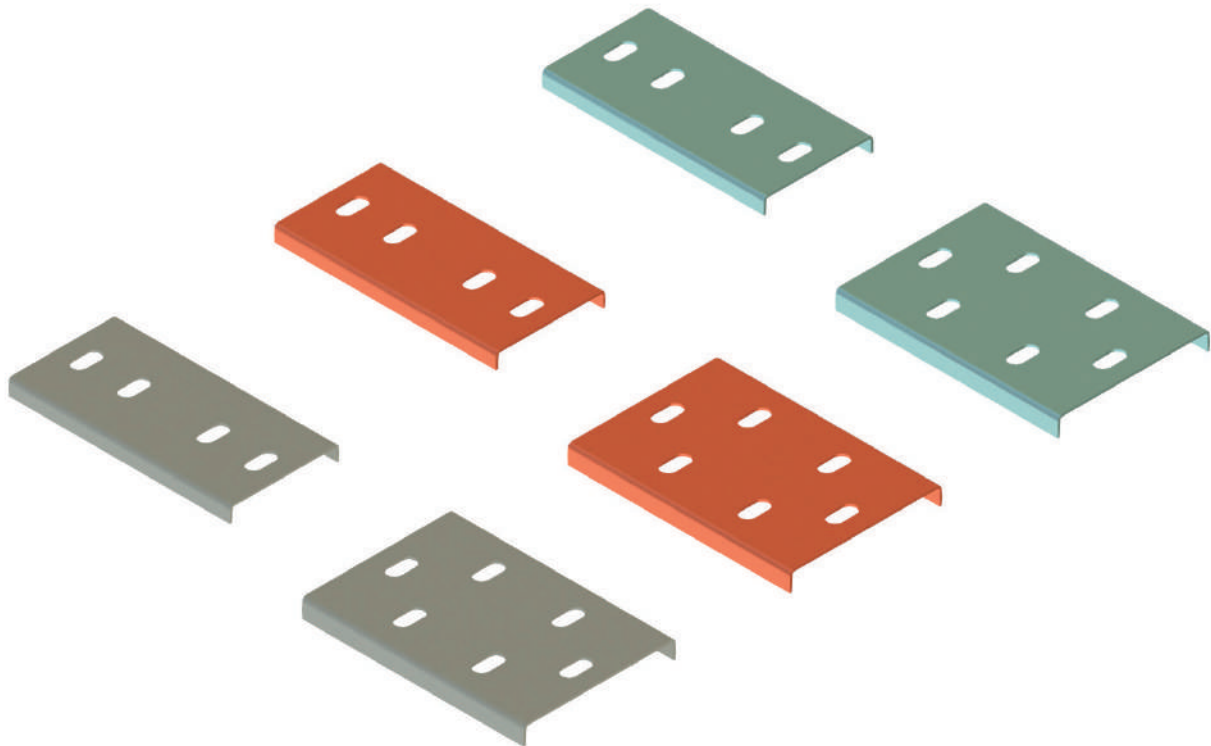
To install a complete cable ladder and cable tray system, these accessories are indispensable. They play the role of arranging the line system more scientifically, safely and aesthetically. The sizes of accessories and cable trays are machined to correspond to each other.

### Main and popular types of accessories

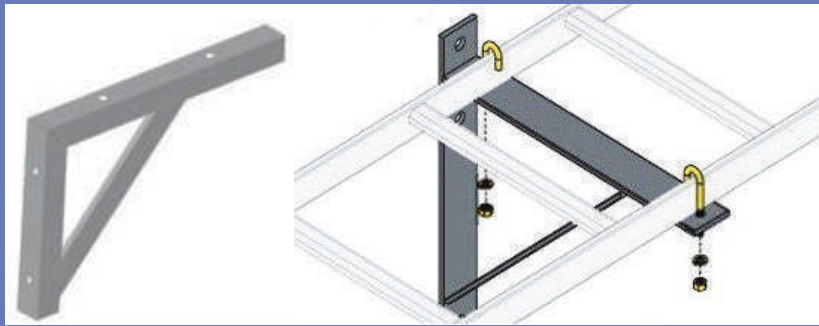


1. Joiner / Connector
2. Channel V
3. Channel U
4. Clevis Hanger
5. Hold down clamp
6. Blind End Cap
7. Bulong, Ecu, Longden
8. Threaded rod

# Connector

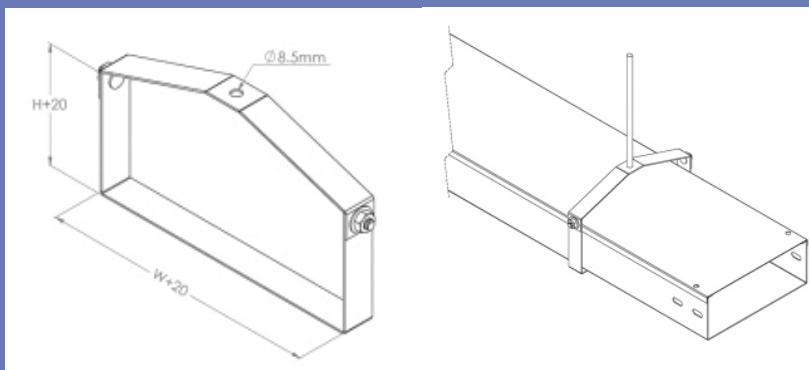






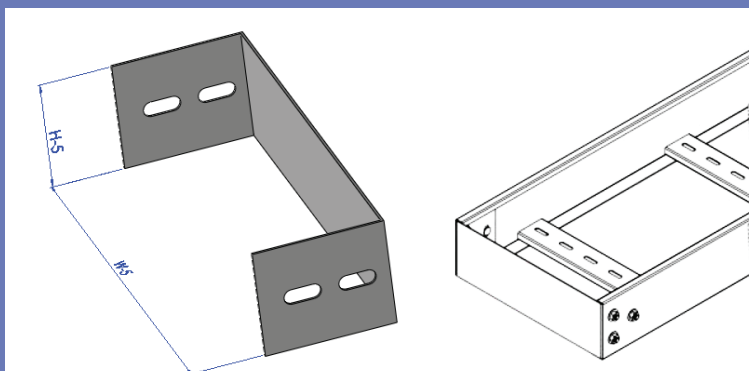
### Wall brackets or Triangle strut bracket

Used to attach cable ladders to walls.



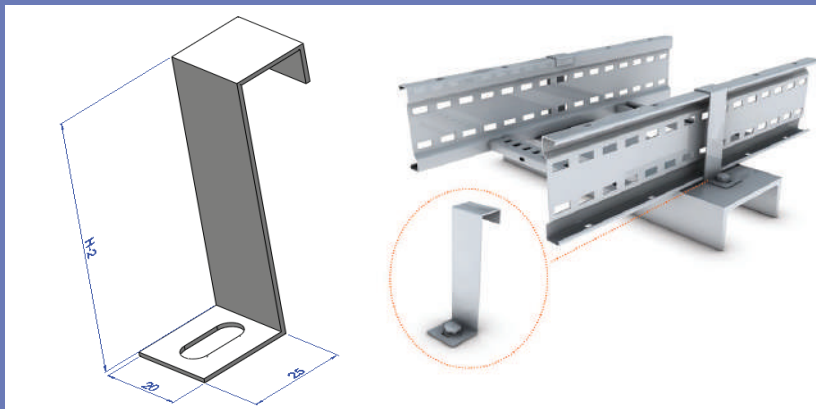
### Clevis Hanger

Used to hang cable trays, cable trays, cable ladders from the ceiling, work-shop...



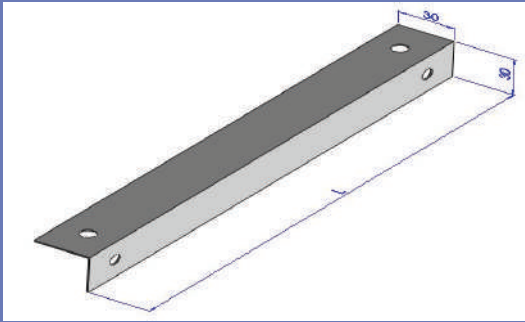
### Blind End Cap

Used to cover cable trays and cable trays



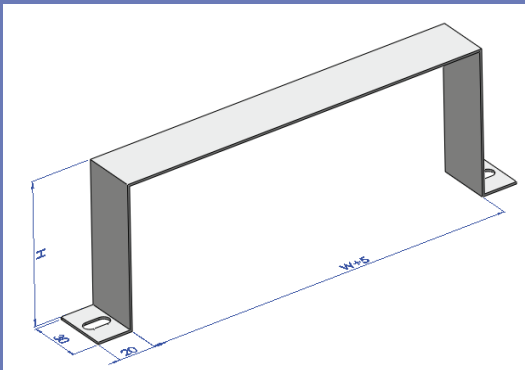
### Hold down clamp

A Z-shaped steel bar used to clamp the cable tray ladder to the rack



### Channel V

Used to supporting or hanging the cable ladder to 2 threaded rods to ensure safety and minimize the risk of accidents.



### Channel U

Used to fix cable trays, cable trays to concrete floors, racks or V holes...



### Bulong, Ecu, Longden

Used to connect cable tray ladders, attach threaded rods and fix brackets...



### Threaded rod

Used to hang racks



### **HEAD OFFICE**

Address: No. 12 – A16, Geleximco Urban Area, Thang Long Avenue, An Khanh, Hoai Duc, Hanoi City.

Hotline: 0902 685 695

Email: [hanoi@3celectric.com](mailto:hanoi@3celectric.com)

### **HANOI BRANCH OFFICE**

Address: No. 11 Tran Thai Tong, Cau Giay District, Hanoi City

Hotline: 0931 899 959

Website: [3ce.vn](http://3ce.vn)

### **3CElectric FACTORY**

Address: Industrial Cluster of Huong Ngai Commune, Thach That District, Hanoi City

Phone: 0243 359 7518 - 0243 359 2593

### **DA NANG BRANCH**

Address: Lot B3, Residential area south of Cam Le Bridge, Hoa Xuan Ward, Cam Le District, Da Nang City

Hotline: 0949 557 587

Email: [danang@3celectric.com](mailto:danang@3celectric.com)

### **HO CHI MINH CITY BRANCH**

Address: BT 16LK2, Ha Do Urban Area, Thoi An Ward, District 12, Ho Chi Minh City.

Hotline: 0981 820 138

Email: [hcm@3celectric.com](mailto:hcm@3celectric.com)